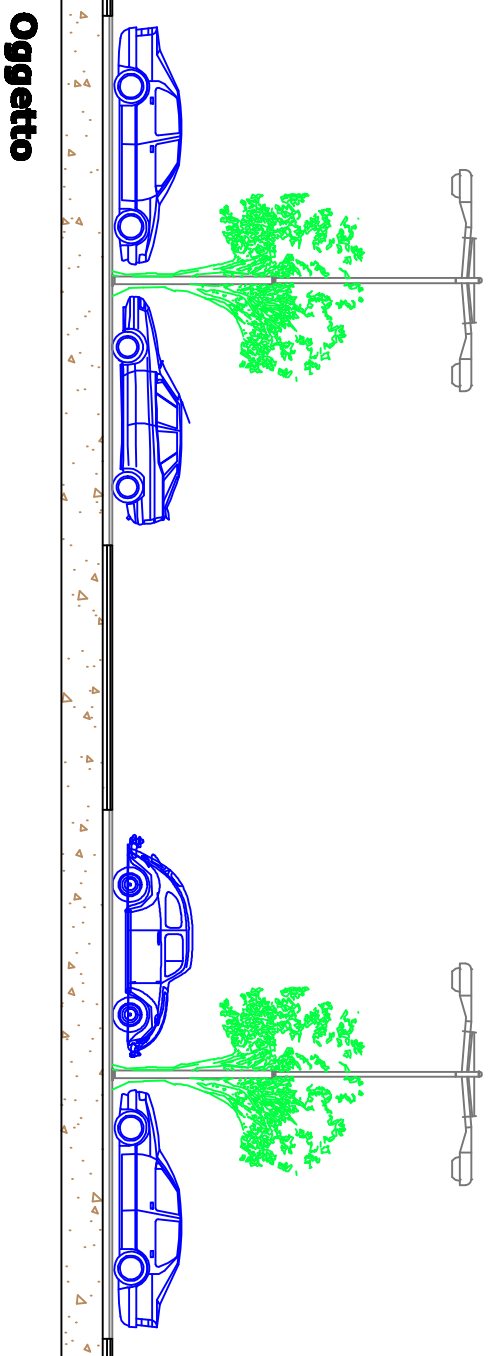


Il Sindaco di Napoli
Commissario delegato ex O.P.C.M.
n.3566 del 05/03/07

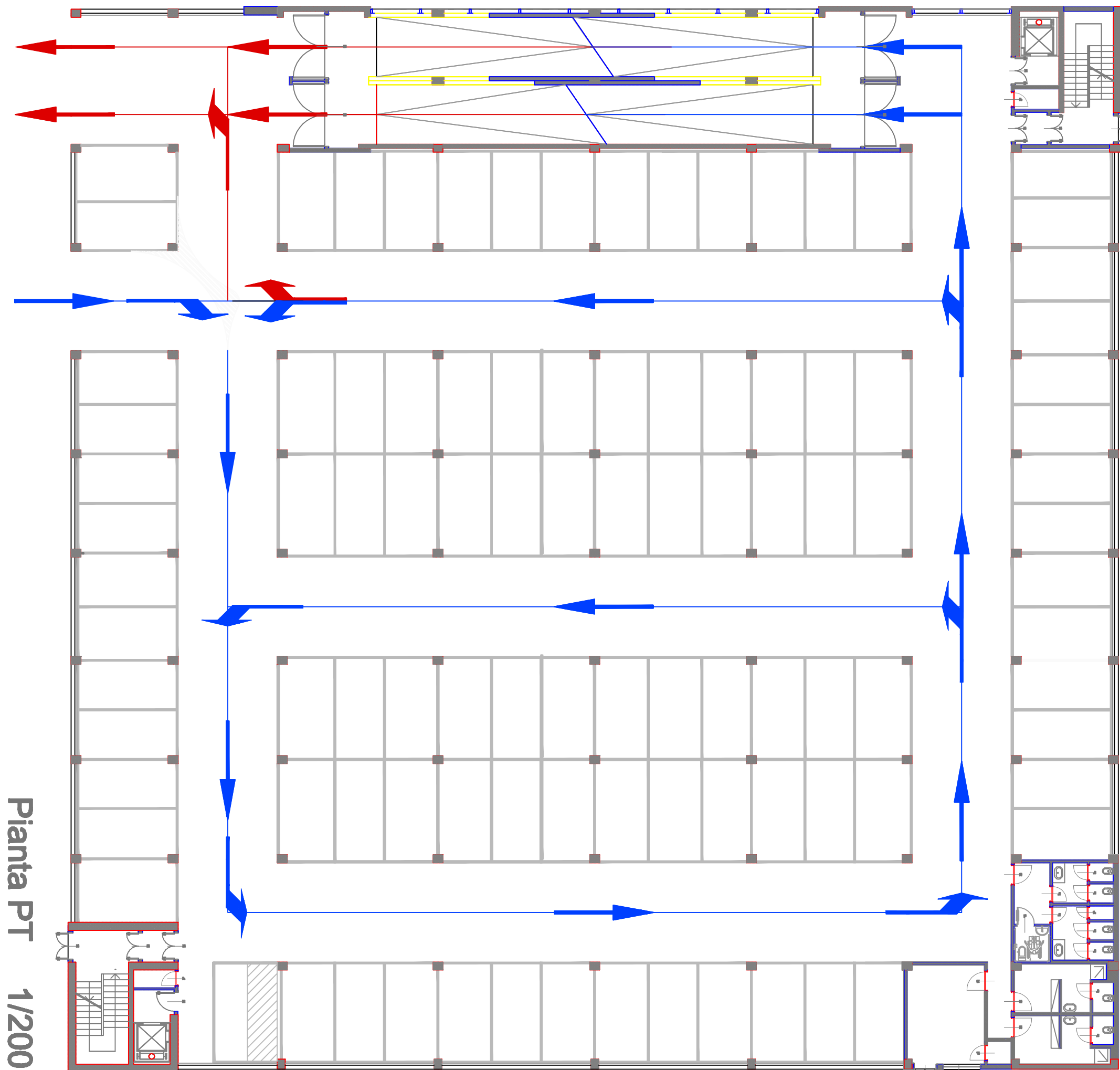


Oggetto

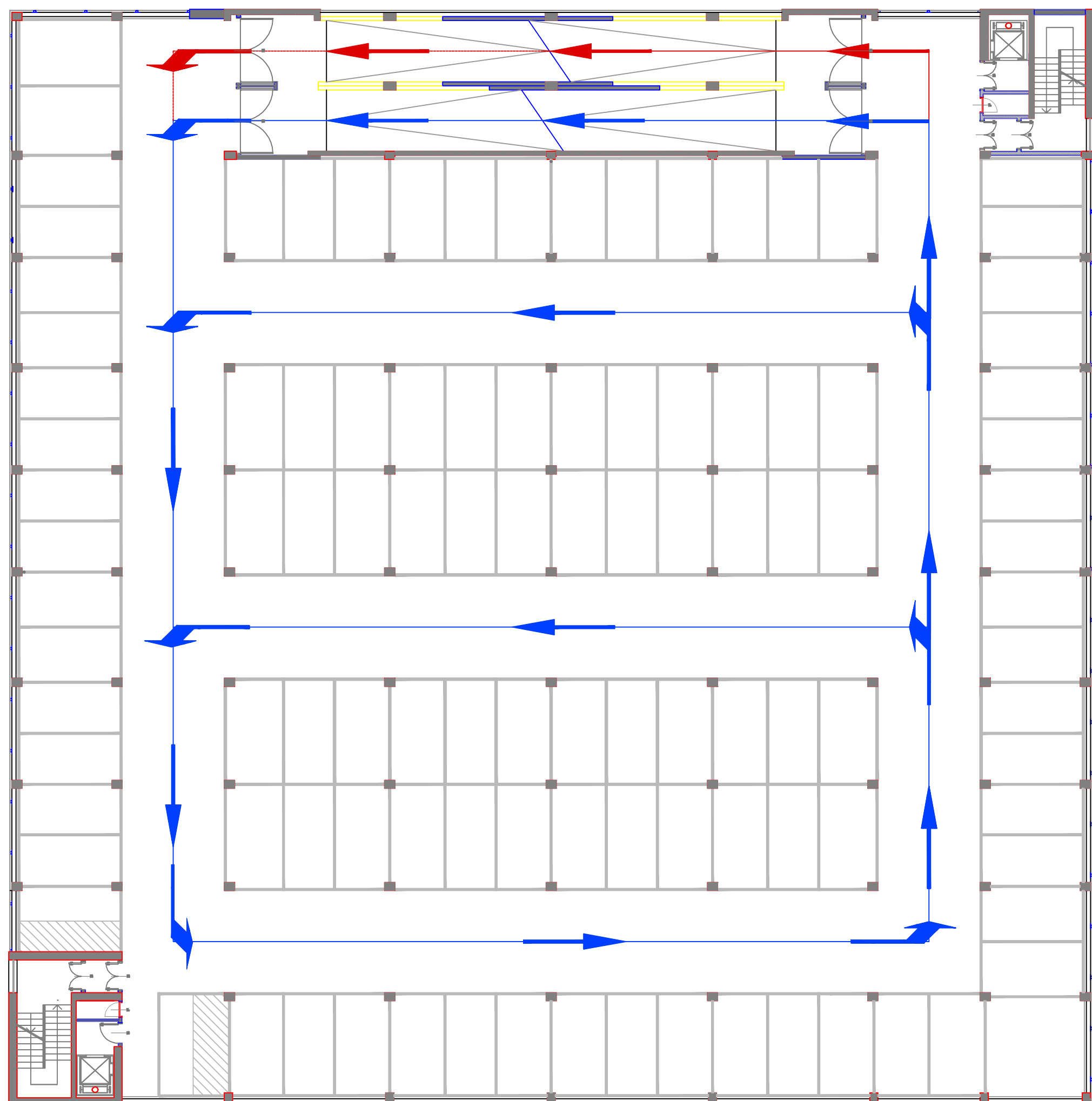
**AMPLIAMENTO DEL PARCHEGGIO DI SCAMBIO
INTEGRATO CHIAIANO**

PROGETTO ESECUTIVO

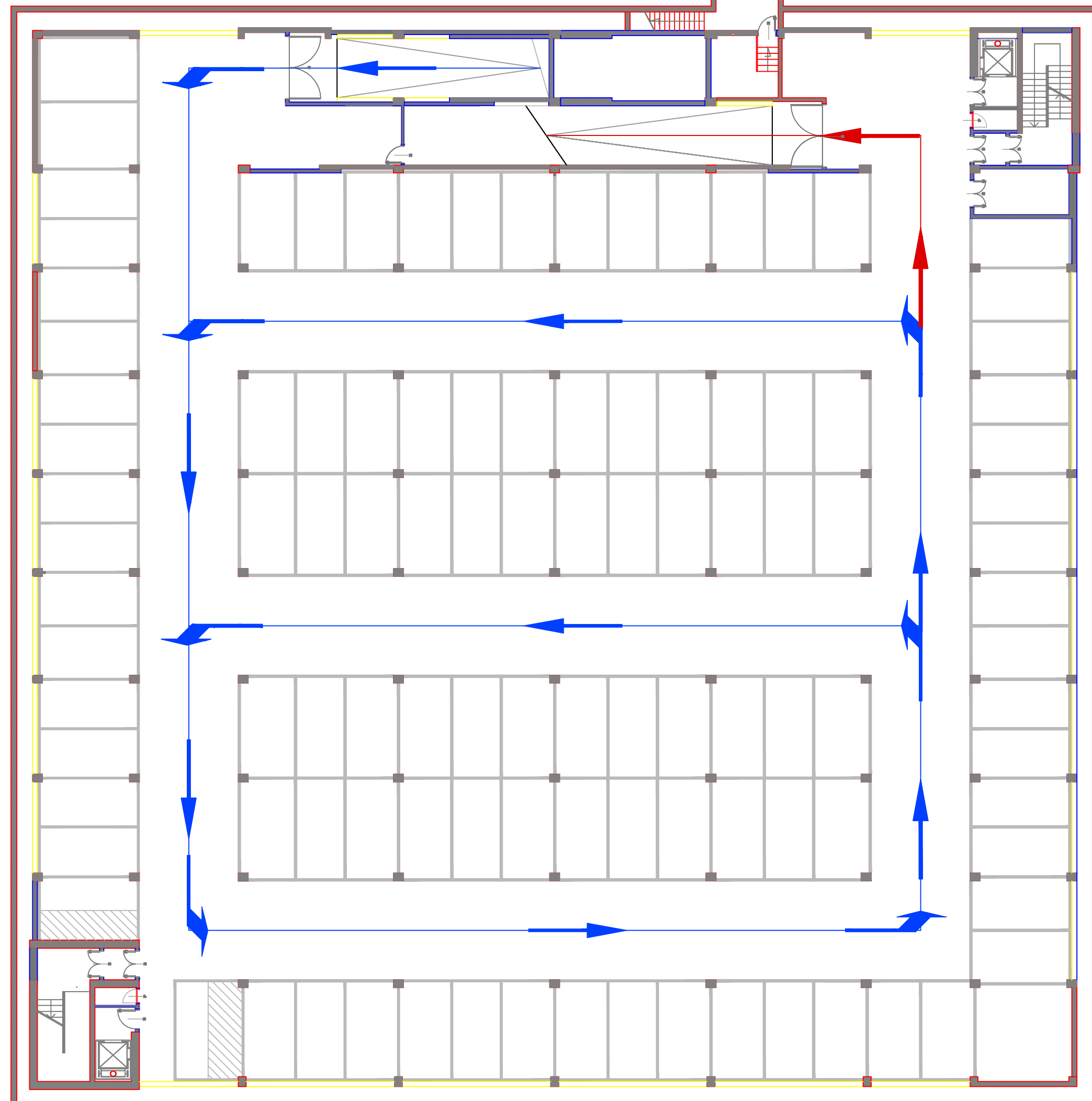
Titolo elaborato		Codice
Edificio		EG A21
Piante con schemi di circolazione		
Il Commissario Delegato Sindaco di Napoli	Il Soggetto Attuatore	
on. Rosa Iervolino Russo	on. Luigi Massa	
Responsabile Unico del Procedimento		Progettisti
Ing. Gianfranco Pomidino		Ing. Florenzo De Cicco
		Ing. Rodolfo Fiaciano
		arch. Armando Tagliatacchia
data	SETTEMBRE 2009	revisione
		0
		scala
		1/200



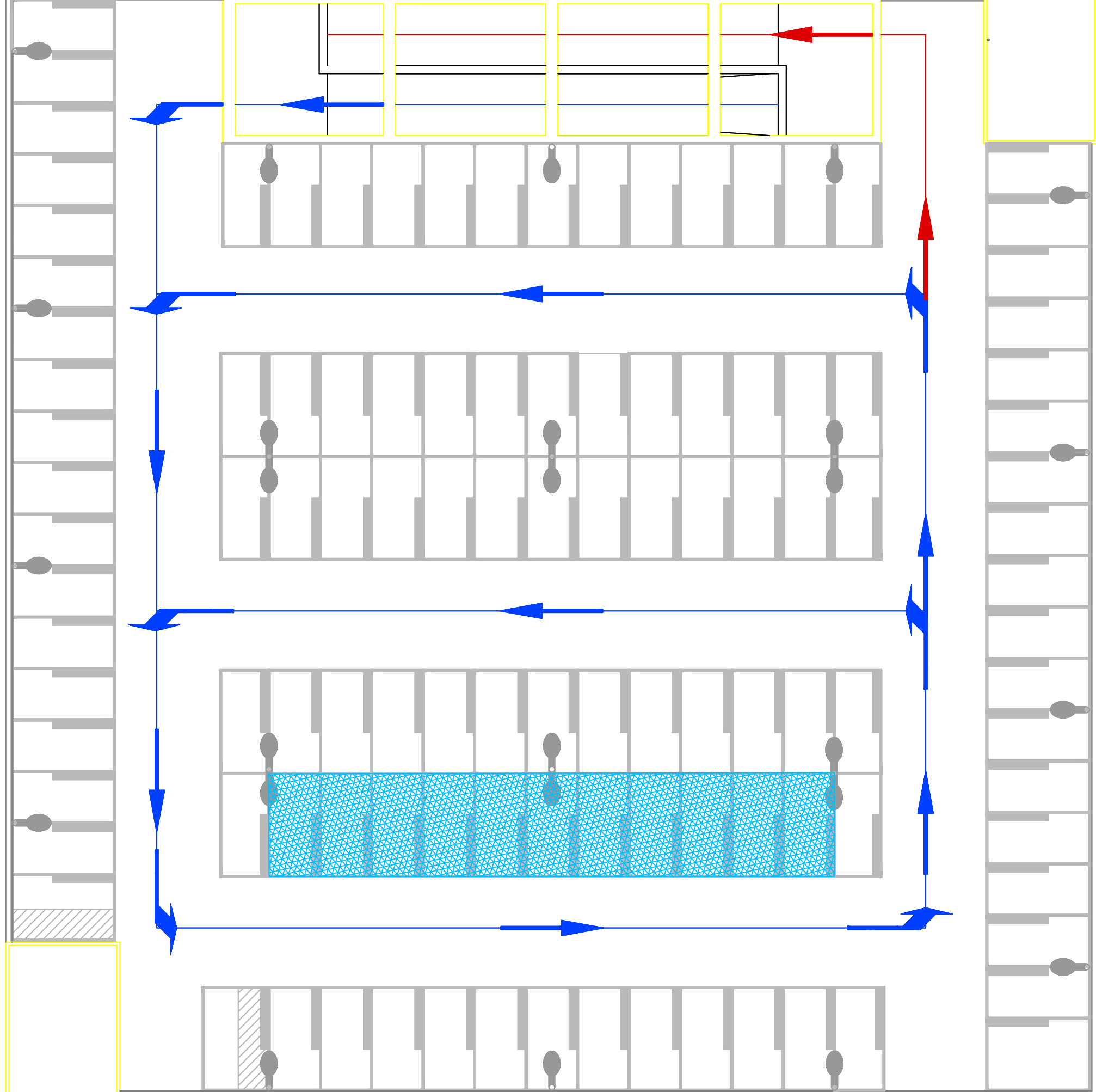
Pianta PT 1/200





Pianta 1 livello 1/200



Pianta livello -1 1/200



Pianta Coperture 1/200

 Flusso veicolare in ingresso
 Flusso veicolare in uscita